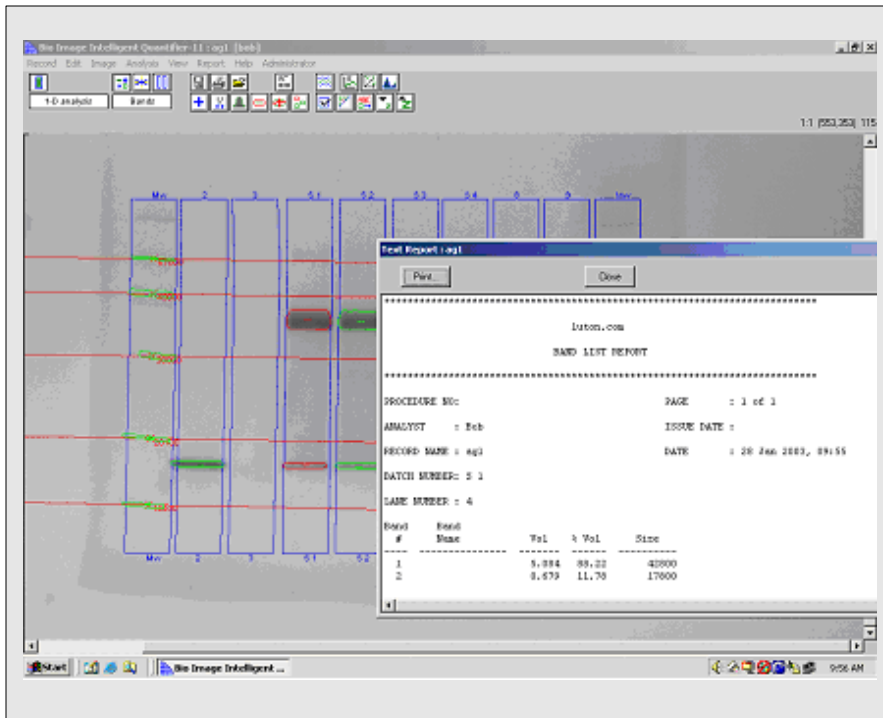


## Intelligent Quantifier-11™ (IQ-11) for Microsoft® Windows®



*Intelligent Quantifier-11 for Windows 2000 and Windows XP is a software system for analyzing scanned images of 1-D electrophoresis separations. It is fully compliant with 21CFR Part 11.*

### Options:

- ◆ IQ/OQ
- ◆ Installation and Training
- ◆ Complete systems

### The Software

- Analyzes images from wet gels, dry gels, and membranes
- Has a complete 1-Dimensional Analysis Package
  - ◆ Lane definition
  - ◆ Band detection
  - ◆ Mw/IEF standards
  - ◆ Dilution series (concentration standards)
  - ◆ Data reports
  - ◆ Image prints
- Allows users to edit all lanes and bands
- Includes an illustrator tool for adding text, arrows, boxes, circles, header

- and footer information fields onto an image
- Generates any number of fully customizable reports
- Allows user to define the analysis annotation colors and composition
- Includes comprehensive User's manual and on-line help

### Fully 21 CFR Part 11 Compliant

- Not merely Windows login and password, but fully integrated logins, passwords, and record signings
- Signings to Acquire, Save Changes, and Report
- Optional comments for every signing
- User name and title on all data reports
- Analyst, Supervisor, and Administrator access levels
- Audit trails of all operations
- System audit trail

### Interface to Excel® macros

- An easy-to-use template combines lane and band data with a Visual Basic processor to load any Excel® spreadsheet.
- Can report up to 20 appropriate loading errors, which are displayed both on the monitor and entered into the record's audit trail

## 1-Dimensional Electrophoresis Analysis

- Automatically detects lanes, finds bands, including irregularly shaped bands, i.e., biphasic bands, "smiling bands," or saturated bands that are substantially wider than the rest of the lane
- Allows the user to vary band detection sensitivity to optimize performance to gel characteristics
- Automatically quantifies bands by defining actual band boundaries based on inflection point analysis
- Subtracts local background

- Provides side-by-side lane profile and band size/quantification comparisons

- Displays single lane density profiles or multiple overlay profiles

### Standards

- Administrator created standards sets, specify interpolation method and values
- Three Mw/IEF interpolation methods: logarithmic, linear, and reciprocal
- Two Dilution interpolation methods: logarithmic and linear
- Custom methods can be added

## System Requirements

### IBM and compatible systems:

- Processor: Intel® Pentium® or AMD® Equivalent
- Hard Disk Drive: 100 GB (if storing images)
- Operating System: Windows 7, Windows 2000 and Windows XP
- Memory: 2 GB minimum
- USB ports: 2
- Display Resolution: 1280 horizontal on a 14-inch screen

## Ordering Information

### Microsoft Windows for PC

Intelligent Quantifier -11  
Catalog #300100

### Available Options include:

Full image and analysis systems including compatible image acquisition devices, CPU, Monitor and printer.

To order, contact:

**Bio Image Systems, Inc.**  
721 Bloomfield, Jackson, MI 49203 USA

**Phone: +1.734.604.2623**  
**Fax: +1.517.788.8869**

**email: [info@bioimage.net](mailto:info@bioimage.net)**  
**<http://www.bioimage.net>**

Intelligent Quantifier is a trademark of Bio Image Systems, Inc., and Windows, Microsoft, and Excel are registered trademarks of Microsoft, Inc.